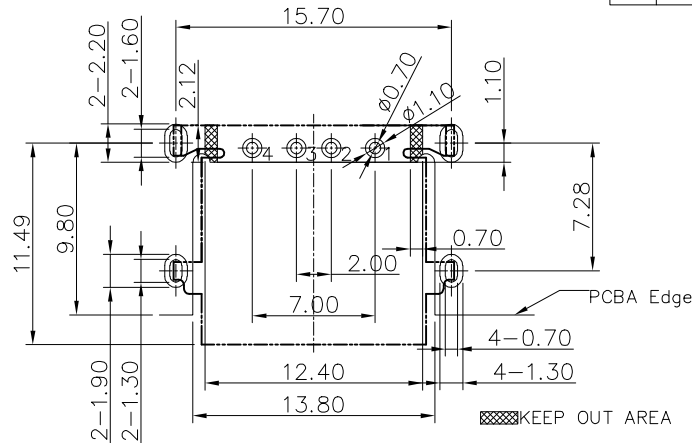
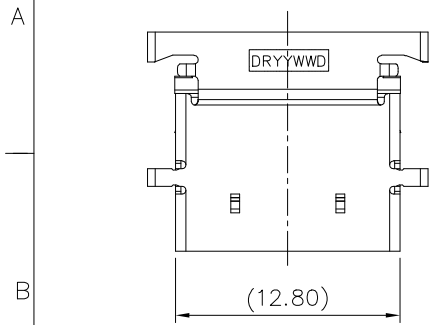
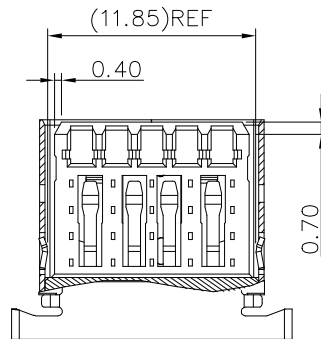
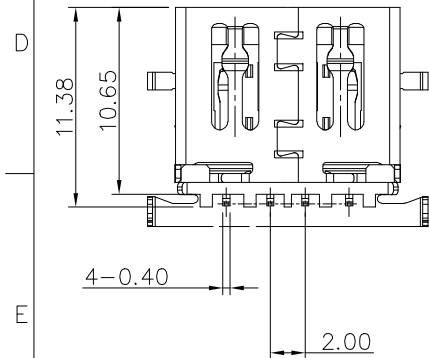
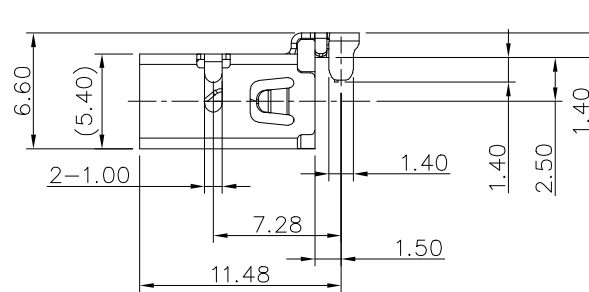
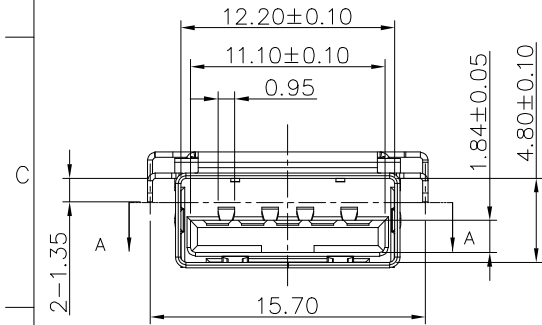




REV.	ECN NO.	LOCATION	DESCRIPTION	DATE	DESIGN
1			INITIAL RELEASE	2019.10.21	Alex_Z



Recommended PCBA Layout (Top View)  
Tolerance:  $\pm 0.05$ , Thickness: 1.0-1.2mm



NOTES:

PRODUCT MEETS CONTROLLED SUBSTANCES SPEC. ROHS 2.0

1. MATERIAL:

- 1.1 HOUSING: LCP, UL94V-0; COLOR: SEE TABLE.
- 1.2 CONTACT 2.0: PHOSPHOR BRONZE.
- 1.3 CONTACT 3.0: BRASS.
- 1.4 SHELL: STAINLESS STEEL.

2. FINISH:

- 2.1 CONTACT: GOLD PLATING(SEE TABLE) ON CONTACT AREA.  
80u" MIN. MATTE-TIN PALTING ON SOLDER TAIL AREA.  
50u" MIN. NICKEL UNDERPLATING OVERALL.
- 2.2 SHELL: 30u" MIN. NICKEL PLATED OVERALL.

3. MECHANICAL SPECIFICATION:

- 3.1 MATING FORCE: 35N MAX.
- 3.2 UNMATING FORCE: 10N MIN.
- 3.3 DURABILITY: 5000 CYCLES.

5704B0-004 H \* \* O O R \*\*

- T: TRAY
- R: REEL
- 0: BLACK
- 1: BLUE
- CONTACTS LPATINGING:  
1: Au G/F 2: Au 5u"  
3: Au 15u" 4: Au 30u"
- R: RoHS
- H: HALOGEN-FREE
- USB

DIM	TOL	DIM	TOL
.x	$\pm 0.35$	x.	$\pm 2'$
.x	$\pm 0.30$		
.xx	$\pm 0.25$		

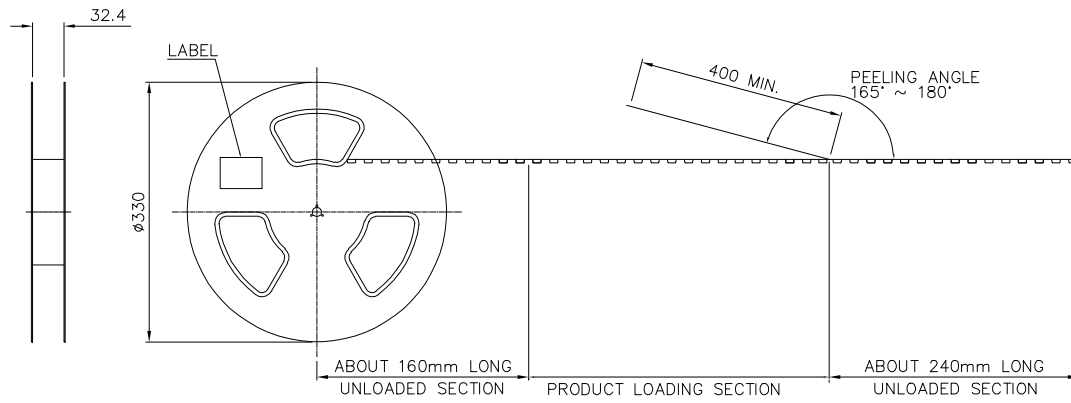


**DEREN**  
SHENZHEN DEREN ELECTRONIC CO., LTD

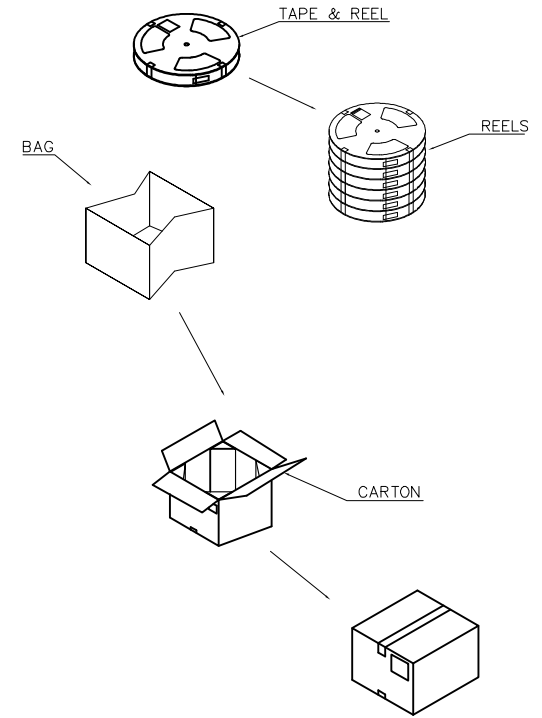
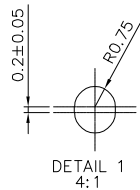
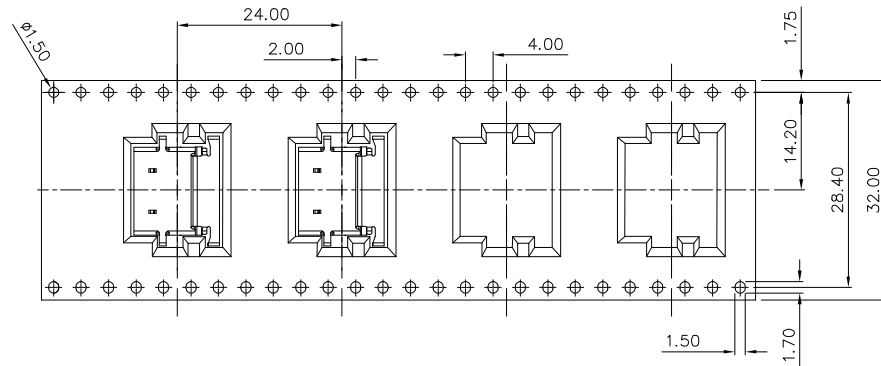
CUSTOMER DRAWING	DATE	TITLE: USB 2.0 9P A/F -2.53CH 1.4GH RVS DIP CONN
DESIGN: Alex_Z	2019.10.21	P/N: SEE TABLE
CHECK:		SHEET: 1/2
REV. 1	APPROVAL:	SCALE: 1:1 UNIT: mm

SHEET: 1/2	UNIT: mm
------------	----------

REEL PACKING DRAWING




USER DIRECTION OF UNREELING →



400	7	2800
PCS/REEL	REEL/CARTON	PCS/CARTON

DIM	TOL	DIM	TOL
x.		x.	
.x			
.xx			

 <b>DEREN</b> SHENZHEN DEREN ELECTRONIC CO., LTD		CUSTOMER DRAWING	DATE	TITLE: USB 2.0 9P A/F -2.50CH 1.40H RVS DIP CONN
		DESIGN: Alex_Z	2019.10.21	P/N: SEE TABLE
DRAW NO. ***	CHECK:			SHEET: 2/2
REV. 1	APPROVAL:			SCALE: N/A UNIT: mm