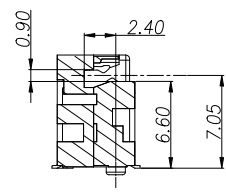
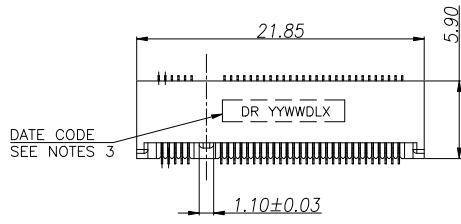
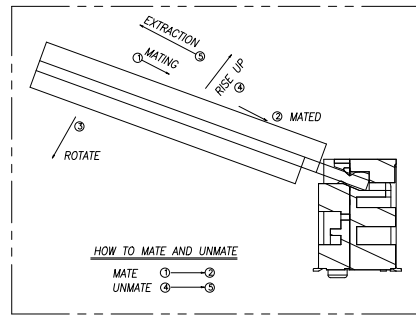
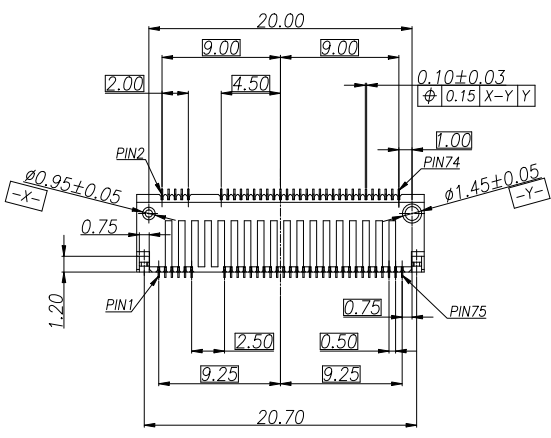
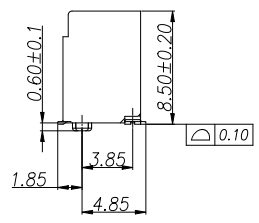
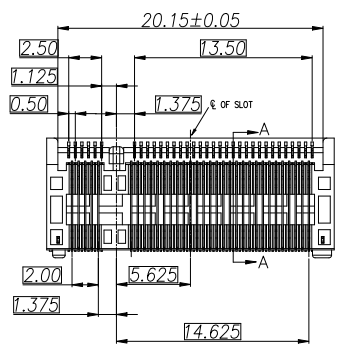


REV.	ECN NO.	LOCATION	DESCRIPTION	DATE	DESIGN
A			INITIAL RELEASE	2024.07.12	Sid Guo
B			MODIFY	2024.07.12	Sid Guo




SECTION A-A
SCALE 1:1

NOTES:
 PRODUCT MUST MEETS CONTROLLED SUBSTANCES SPEC. ROHS 2.0
 1.MATERIAL:
 1.1 HOUSING:LCP, UL94V.0; COLOR: BLACK
 1.2 CONTACT PHOSPHOR BROZNE.
 1.3 SOLDER PEG AND LATCH:STAINLESS STEEL.
 2.FINISH:
 2.1 CONTACT: 50u" MIN NICKEL UNDERPLATED ALL OVER.
 GOLD FLASH PLATING ON SOLDERTAIL.
 GOLD PLATING (SEE NOTE 10) ON CONTACT AREA.
 2.2 SOLDER PEG:
 MATTE TIN 100u" MIN. AND NICKEL 50u" MIN UNDERPLATED.
 3.LOGO&DATE CODE:
 LOGO: DR OR DEREN
 DATECODE: YYWDLX
 YY: YEAR (09: 2009)
 WW: WEEK (25: THE 25TH WEEK)
 D: DAY (1~7: SUNDAY~SATURDAY)
 L: LINE NUMBER OF ASSEMBLY (A: LINE A)
 X: MANUFACTURE CODE
 4.REFLOW SOLDER CAPABLE TO 260°C 10 SEC.
 5.ELECTRICAL CHARACTERISTICS :
 5.1 CURRENT RATING:0.5AMP.
 5.2 CONTACT RESISTANCE:55 MILLIOHMS MAX. INITIAL,
 20 MILLIOHMS MAX. CHANGE AFTER TEST.
 5.3 IMPEDANCE:85±10% OHMS
 5.4 INSULATION RESISTANCE:500 MEGOHMS MIN. INITIAL
 100 OHM MIN. CHANGE AFTER TEST.
 5.5 DIELECTRICAL WITHSTAND VOLTAGE:300V AC
 MIN.AT SEA LEVEL.
 6.MECHANICAL CHARACTERISTICS:
 6.1 INSERTION FORCE: 20N MAX.PER CONTACT PAIR.
 6.2 DURABILITY:60 MATING AND UNMATING CYCLES.
 7.ENVIRONMENTAL CHARACTERISTICS:
 OPERATING TEMPERATURE RANGE: 40°C TO +80°C.
 8.RECOMMENDED STENCIL THICKNESS:0.12MM MIN.
 9.CONNECTOR ACTUAL PIN QUANTITY IS 67,AS THE KEY TAKING OUT 8 PINS.
 10.PART NUMBER DESCRIPTION:
 5621D3-029 H X 1 1 1 X



PACKING CODE:
 R: EMBOSS WIDTH 44mm,SLOT FORWARD
 1: EMBOSS WIDTH 44mm,SLOT BACKWARD
 2: EMBOSS WIDTH 32mm,SLOT FORWARD
 3: EMBOSS WIDTH 32mm,SLOT BACKWARD
 Logo:
 0: No Logo
 1: DR Logo
 Color:
 1: Black
 2: White
 KEY TYPE:
 1: KEY B
 PLATING CODE:
 1: AuGF 2: Au5u"
 3: Au10u" 4: 15u"
 5: Au30u"
 HALOGEN CODE:
 H: HALOGEN FREE

DIM	TOL	DIM	TOL
x.	±0.25	x.	±2'
.x	±0.20	.x	±1'
.xx	±0.15		
.xxx	±0.10		

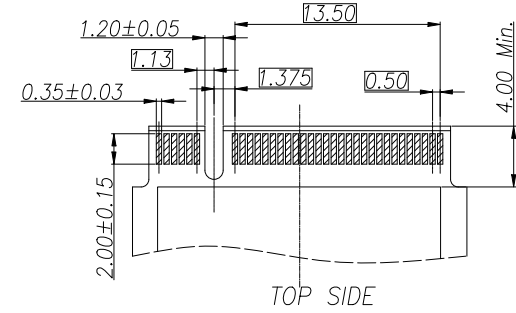
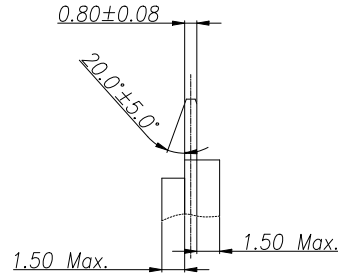
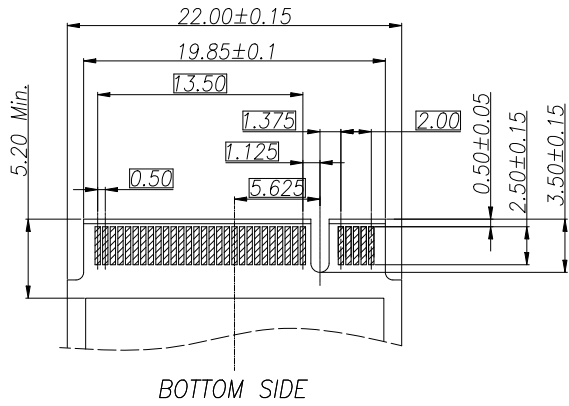


DEREN
SHENZHEN DEREN ELECTRONIC CO., LTD

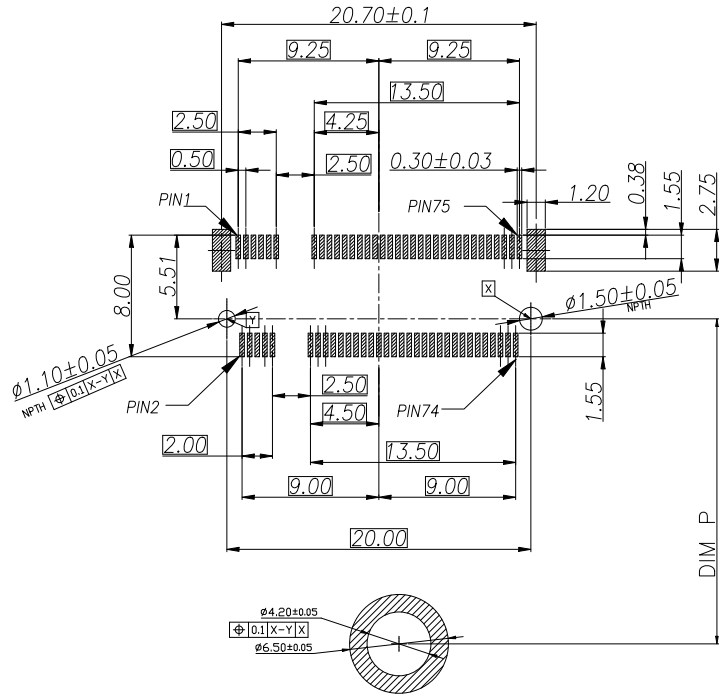
C-DWG:	TY	DATE	TITLE: NGFF 8.5H KEY B GEN4
DESIGN:	Sid Guo	2024.07.12	P/N: 5621D3-029HX111X
CHECK:	Mike Chen	2024.07.12	SHEET: 1/6
APPROVAL:	BILL LIN	2024.07.12	SCALE: N/A UNIT: mm

DRAW NO.
SC2208613-2


PLUG PCB



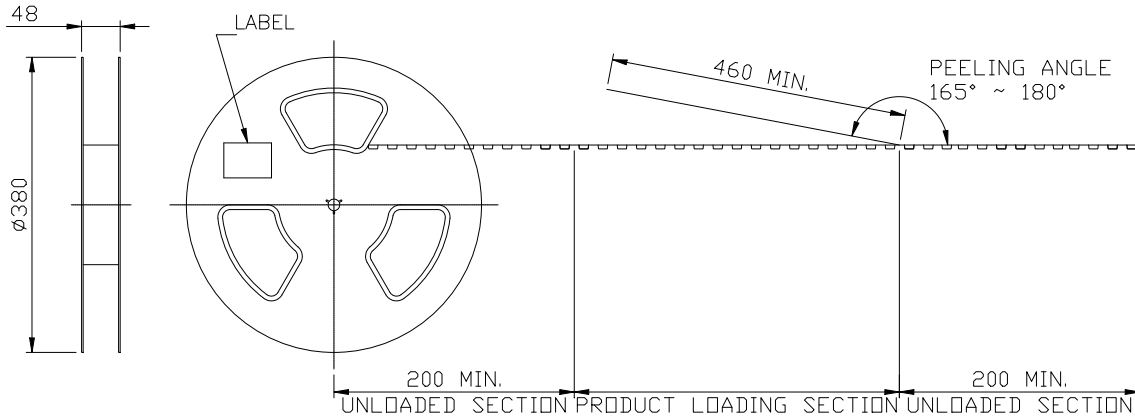
RECOMMENDED PCB LAYOUT(TOP VIEW)



22110	107.60
2280	77.60
2260	57.60
2242	39.60
2230	27.60
3042	39.60
3030	27.60
MODULE TYPE	DIM.P

DIM	TOL	DIM	TOL	 DEREN SHENZHEN DEREN ELECTRONIC CO., LTD	C-DWG:	TY	DATE	TITLE:NGFF 8.5H KEY B GEN4	
.x	±0.30	.x	±2°		DRAW NO.	DESIGN:	Sid Guo	2024.07.12	P/N:5621D3-029HX111X
.xx	±0.25	.x	±1°		SC2208613-2	CHECK:	Mike Chen	2024.07.12	SHEET: 2/6
.xxx	±0.15				REV. B	APPROVAL:	BILL LIN	2024.07.12	SCALE: N/A UNIT: mm

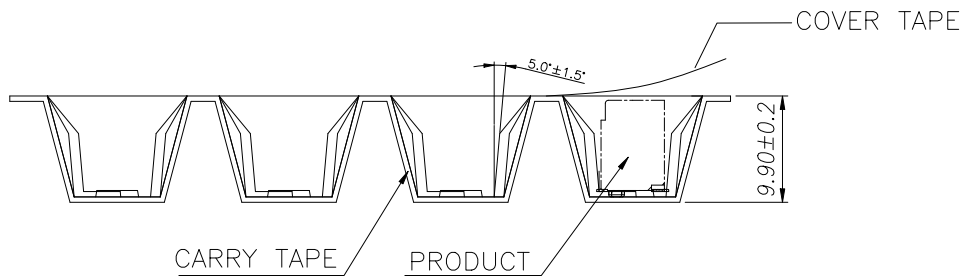
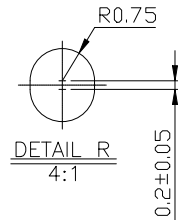
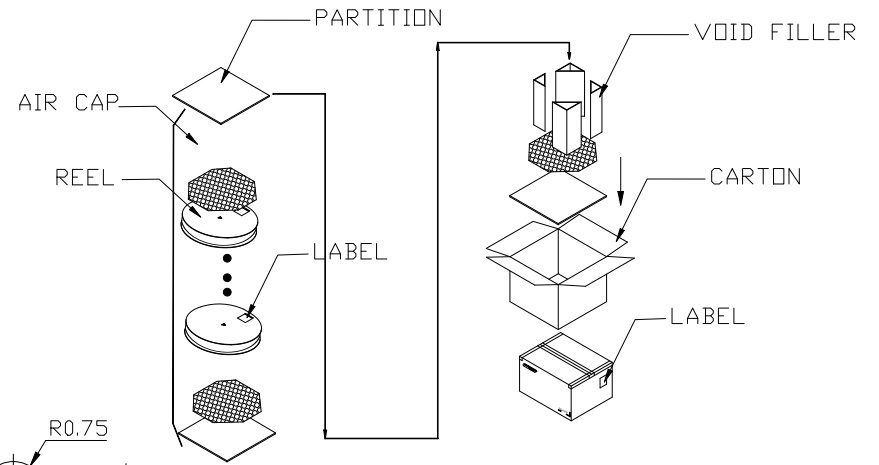
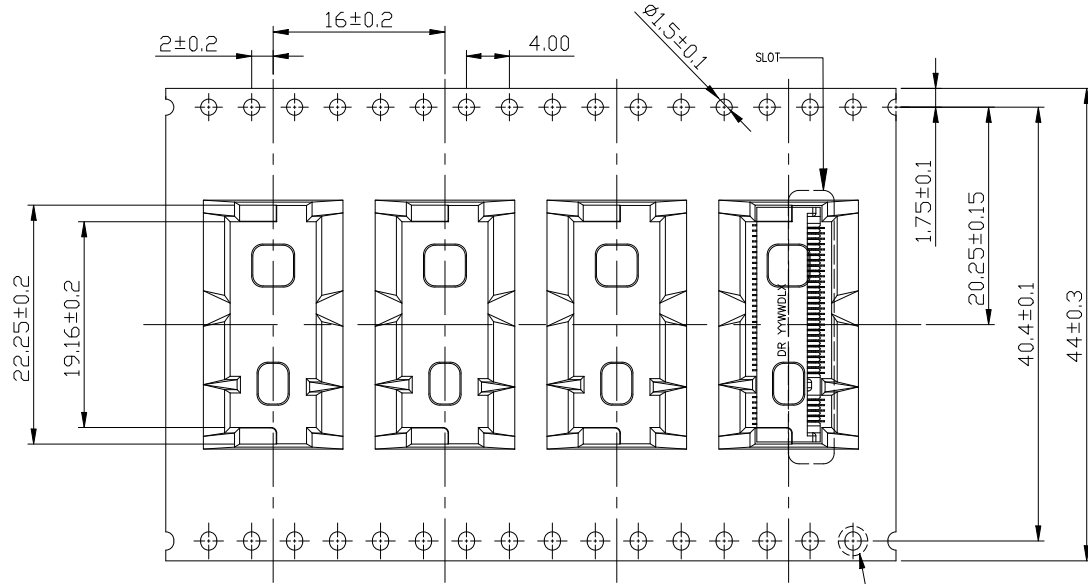
EMBOSS WIDTH 44mm, SLOT FORWARD FOR 5621D3-029HX111R




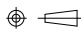
NOTES :

- MATERIAL :
COVER TAPE : PET ,COLOR:CLEAR
CARRIER TAPE : PS,COLOR:CLEAR
REEL : PS,COLOR:BLUE
CARTON: CORRUGATED FIBER
- DIMENSION :
REEL : SEE DRAWING
SHIPPING BOX: 385X385X295mm
- QUANTITY : SEE TABLE
- PEELING RESISTANCE : 10gf~130gf (for 12~56mm)
- PEELING SPEED : 300mm/MINUTES

FEEDING DIRECTION →

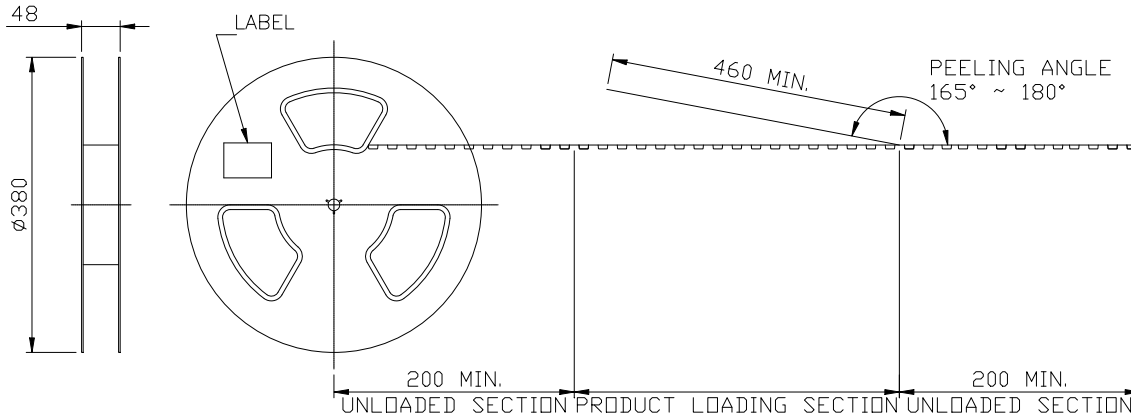


500	5	2500
PCS/ REEL	REEL/ CARTON	PCS/ CARTON

	DEREN SHENZHEN DEREN ELECTRONIC CO., LTD		
	C-DWG:	TY	DATE
DRAW NO.	DESIGN:	Sid Guo	2024.07.12
SC2208613-2	CHECK:	Mike Chen	2024.07.12
REV. B	APPROVAL:	Bill Lin	2024.07.12
TITLE: NGFF 8.5H KEY B GEN4			P/N: 5621D3-029HX111X
SHEET: 3/6			
SCALE: N/A		UNIT: mm	

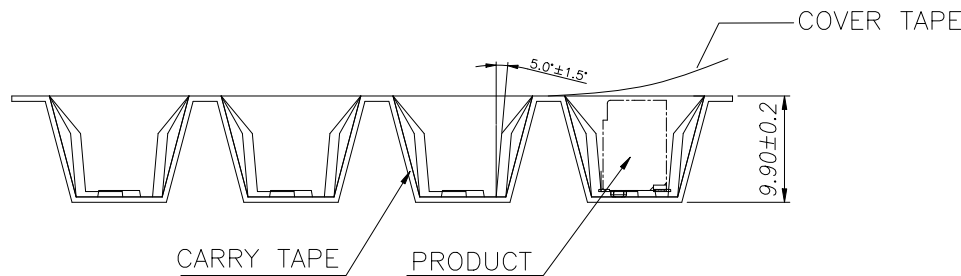
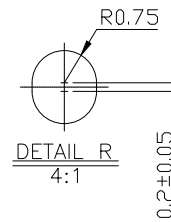
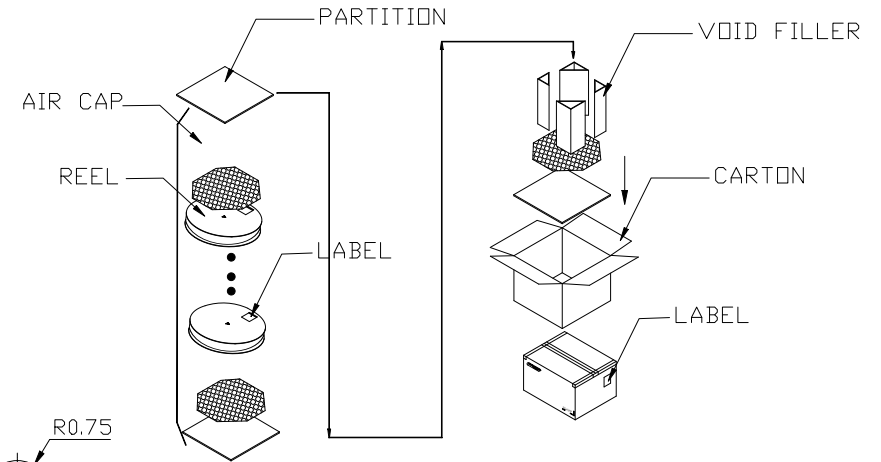
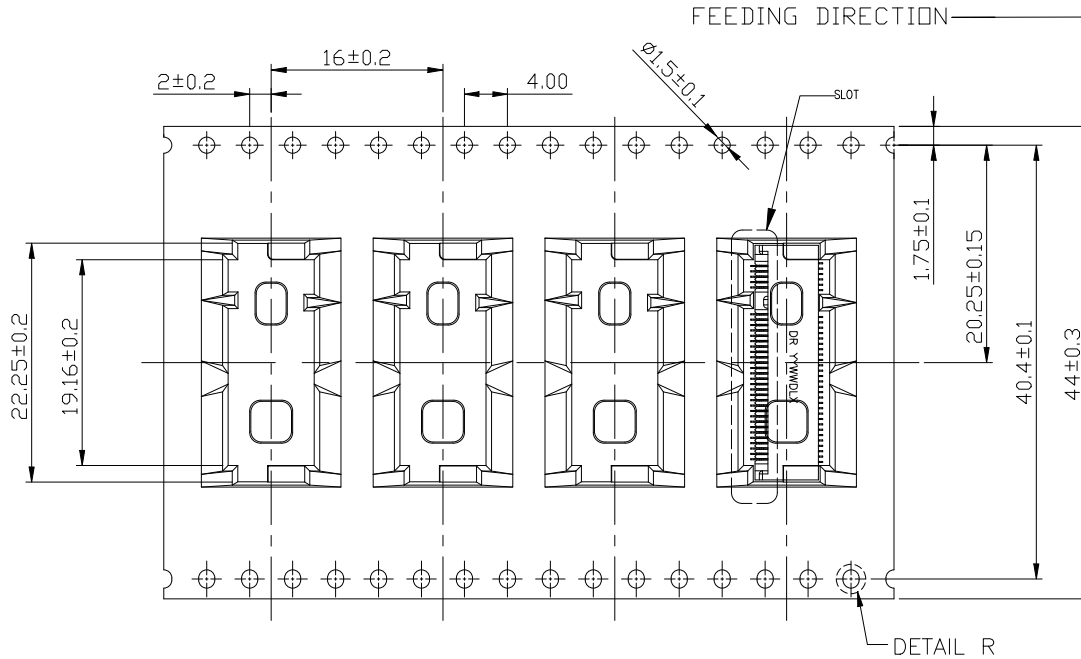
DIM	TOL	DIM	TOL
.x	±0.30	.x	±2°
.x	±0.25	.x	±1°
.xx	±0.20		
.xxx	±0.15		

EMBOSS WIDTH 44mm, SLOT BACKWARD FOR 5621D3-029HX1111




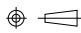
NOTES :

- MATERIAL :
COVER TAPE : PET ,COLOR:CLEAR
CARRIER TAPE : PS,COLOR:CLEAR
REEL : PS,COLOR:BLUE
CARTON: CORRUGATED FIBER
- DIMENSION :
REEL : SEE DRAWING
SHIPPING BOX: 385X385X295mm
- QUANTITY : SEE TABLE
- PEELING RESISTANCE : 10gf~130gf (for 12~56mm)
- PEELING SPEED : 300mm/MINUTES

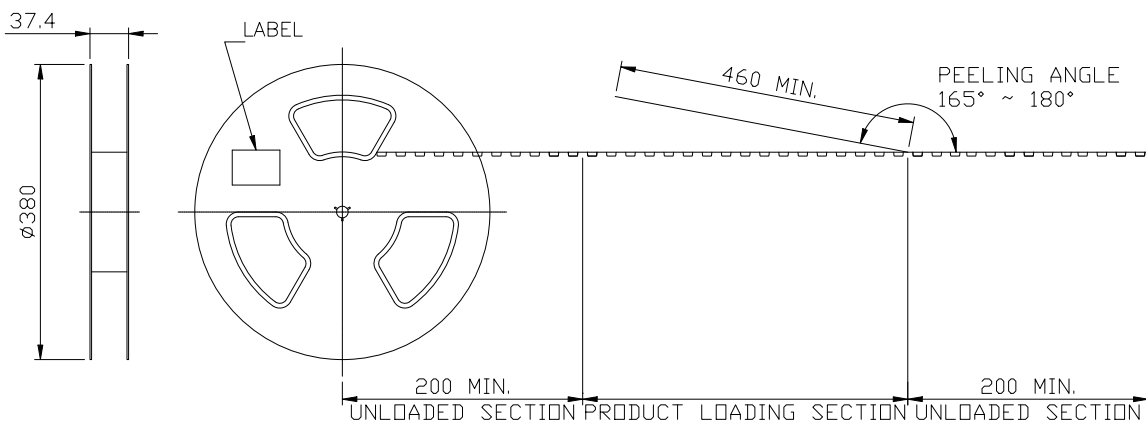


500	5	2500
PCS/ REEL	REEL/ CARTON	PCS/ CARTON

DIM	TOL	DIM	TOL
.x	±0.30	.x	±2'
.x	±0.25	.x	±1'
.xx	±0.20		
.xxx	±0.15		

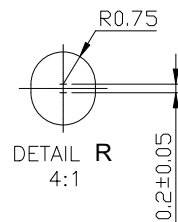
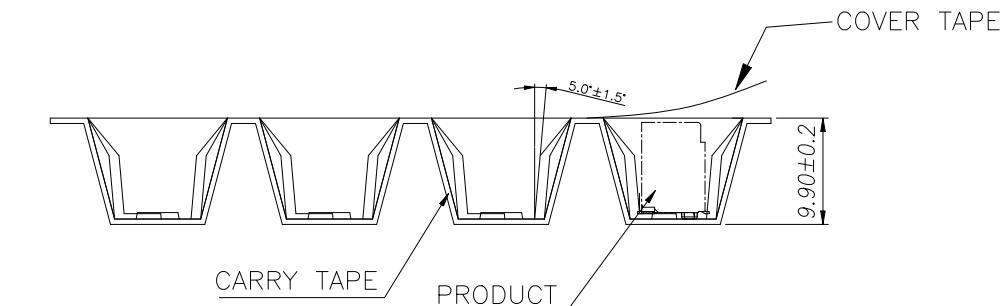
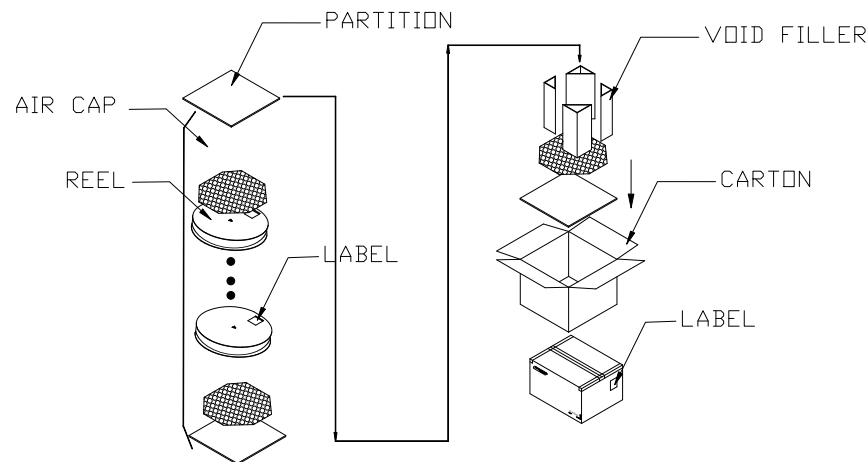
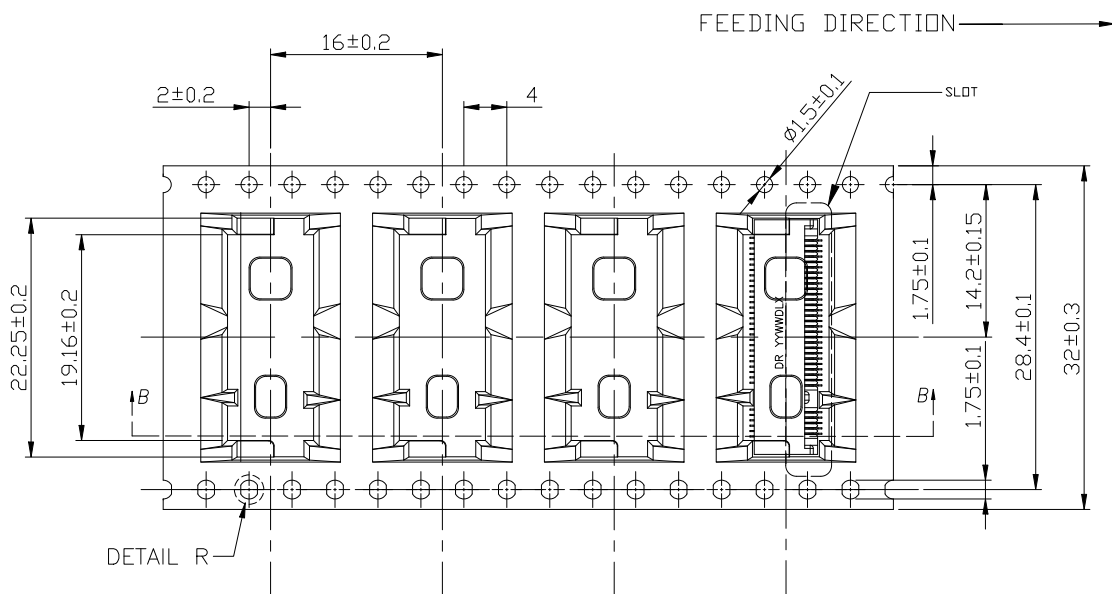
	DEREN SHENZHEN DEREN ELECTRONIC CO., LTD		
	C-DWG:	TY	DATE
DRAW NO.	DESIGN:	Sid Guo	2024.07.12
SC2208613-2	CHECK:	Mike Chen	2024.07.12
REV.	B	APPROVAL:	Bill Lin 2024.07.12
TITLE: NGFF 8.5H KEY B GEN4			P/N: 5621D3-029HX111X
SHEET: 4/6			
SCALE: N/A		UNIT: mm	

EMBOSS WIDTH 32mm SLOT FORWARD FOR 5621D3-029HX1112




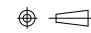
NOTES :

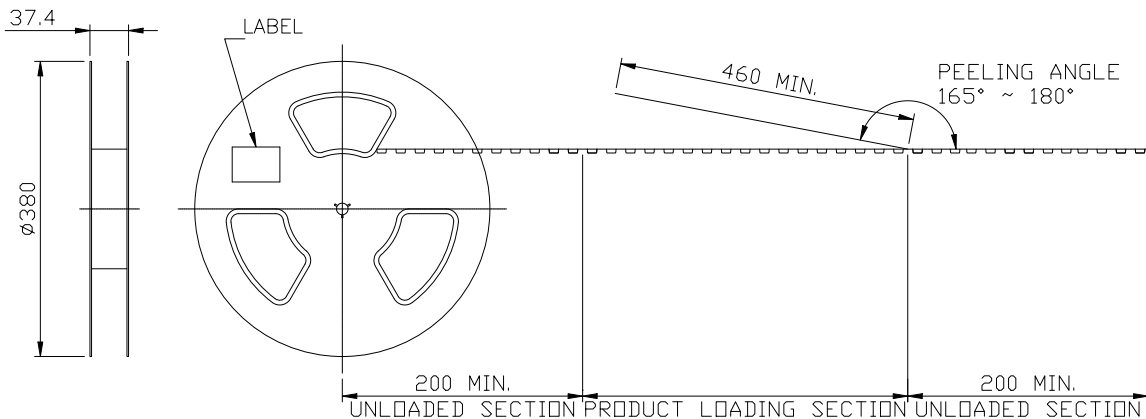
- MATERIAL :
COVER TAPE : PET ,COLOR:CLEAR
CARRIER TAPE : PS,COLOR:CLEAR
REEL : PS,COLOR:BLUE
CARTON: CORRUGATED FIBER
- DIMENSION :
REEL : SEE DRAWING
SHIPPING BOX: 385X385X295mm
- QUANTITY : SEE TABLE
- PEELING RESISTANCE : 10gf~130gf (for 12~56mm)
- PEELING SPEED : 300mm/MINUTES



500	6	3000
PCS/ REEL	REEL/ CARTON	PCS/ CARTON

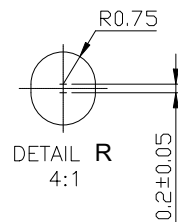
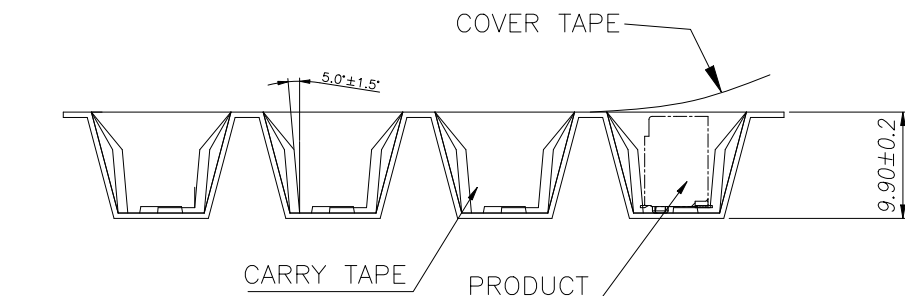
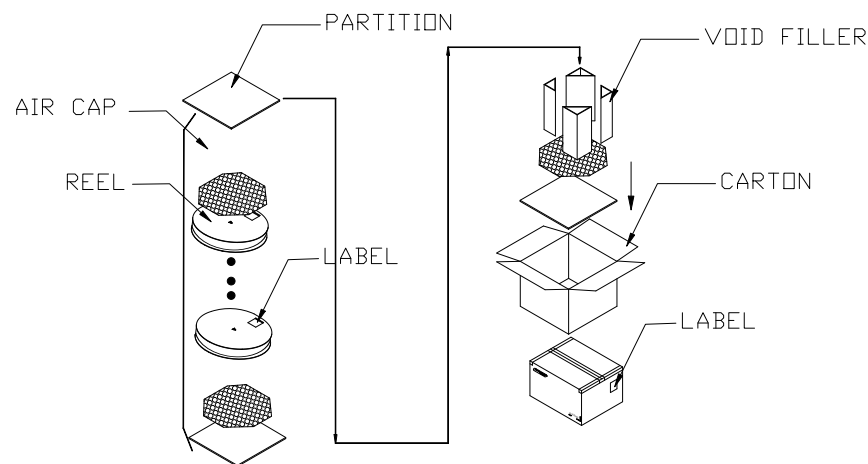
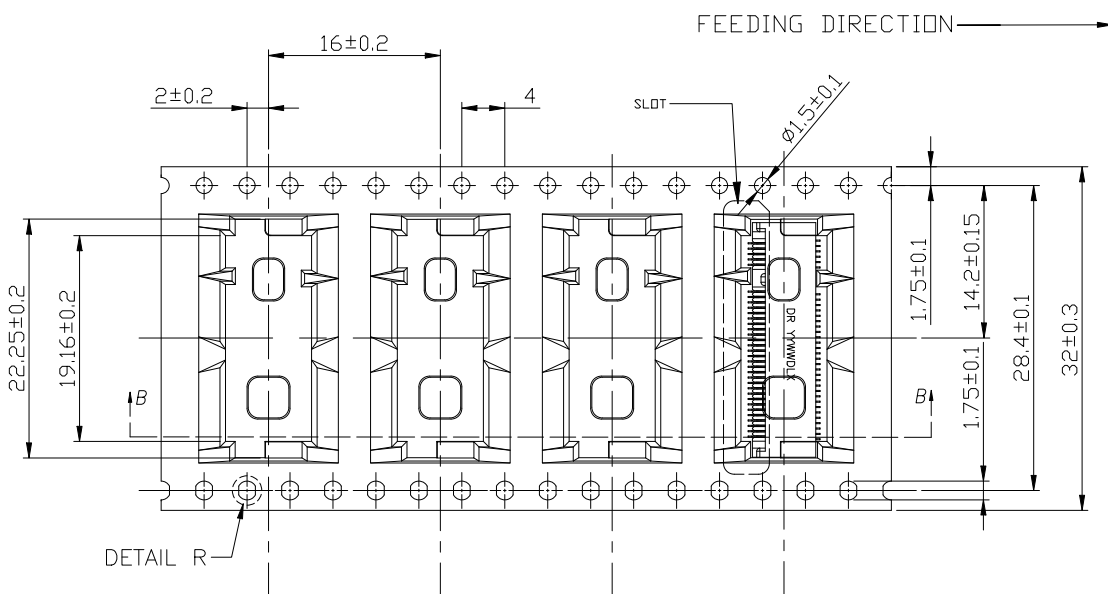
DIM	TOL	DIM	TOL
x	±0.30	x	±2'
.x	±0.25	.x	±1'
xx	±0.20		
	±0.15		

 <p>DEREN SHENZHEN DEREN ELECTRONIC CO., LTD</p>	C-DWG:	TY	DATE	TITLE: NGFF 8.5H KEY B GEN4
	DRAW NO. SC2208613-2	DESIGN: Sid Guo	2024.07.12	P/N: 5621D3-029HX111X
REV. B	CHECK: Mike Chen	2024.07.12	SHEET: 5/6	
	APPROVAL: Bill Lin	2024.07.12	SCALE: N/A	



NOTES :

- MATERIAL :
COVER TAPE : PET ,COLOR:CLEAR
CARRIER TAPE : PS,COLOR:CLEAR
REEL : PS,COLOR:BLUE
CARTON: CORRUGATED FIBER
- DIMENSION :
REEL : SEE DRAWING
SHIPPING BOX: 385X385X295mm
- QUANTITY : SEE TABLE
- PEELING RESISTANCE : 10gf~130gf (for 12~56mm)
- PEELING SPEED : 300mm/MINUTES



500	6	3000
PCS/ REEL	REEL/ CARTON	PCS/ CARTON

DIM	TOL	DIM	TOL
x	± 0.30	x	$\pm 2'$
.x	± 0.25	.x	$\pm 1'$
xx	± 0.20		
	± 0.15		

	DEREN SHENZHEN DEREN ELECTRONIC CO., LTD		
	C-DWG:	TY	DATE
DRAW NO.	DESIGN:	Sid Guo	2024.07.12
SC2208613-2	CHECK:	Mike Chen	2024.07.12
REV. B	APPROVAL:	Bill Lin	2024.07.12
TITLE: NGFF 8.5H KEY B GEN4			P/N: 5621D3-029HX111X
SHEET:	6/6		
SCALE:	N/A	UNIT:	mm