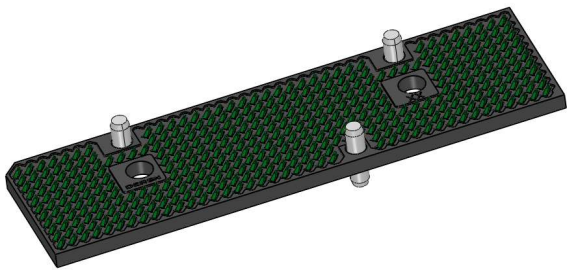
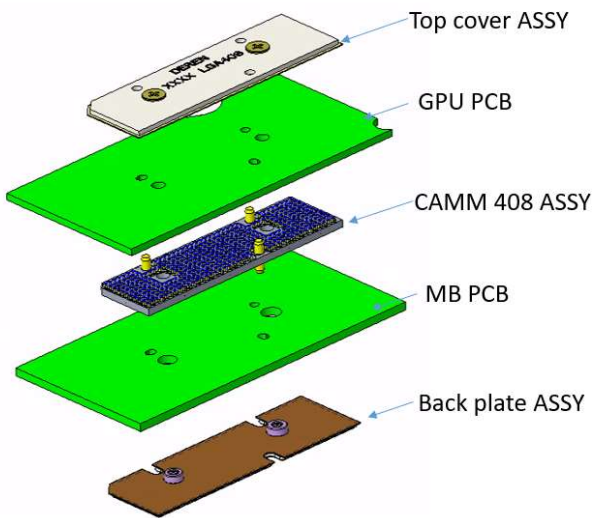


RELEVANT INFORMATION

- Based on the Lenovo P1 644 model successfully launched to the market, Under internal collaboration, the CAMM 408 electrical connector was developed under internal collaboration. The CAMM 408 connector also adopts a double-sided press-fit process in its structural design, enabling reliable interconnection between the graphics card and the mainboard.
- CAMM LGA408 connector adopts double-sided terminal compression contact design, which eliminates the welding process, effectively improves the process efficiency, eliminates the risk caused by product welding abnormalities, and save space for the height design of the whole sets.
- Shorter electrical paths require less power can reach higher speeds.
- The reduced footprint on the PCB underneath the CAMM module also saves valuable space for other motherboard components.



Socket



FETURE

- Voltage: 25 Volts AC (rms).Hot Ball-Attach Process.
- Recommended torque for screw fastening:0.1~0.2 N.m (14.2~28.3 oz.in).
- Normal Force – Terminal (fully compressed): Max 35 gf per pin.
- Retention Force -Terminal: 50 gf minimum per pin;
- Continuous Temperature: 15 °Cto 85 °C.
- Operating temperature : -55 °C to 85 °C.

TARGET MARKET

- CAMM LGA408 is aimed at high-performance notebooks.

BENEFIT

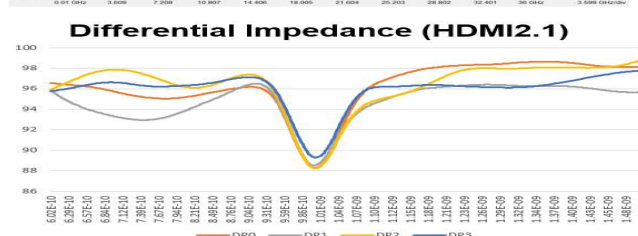
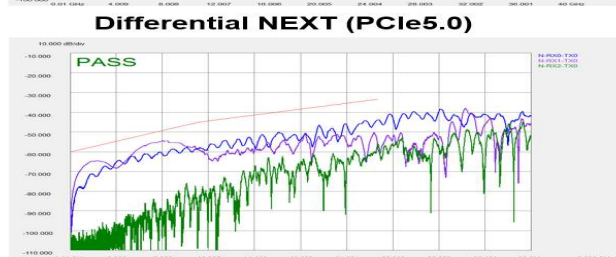
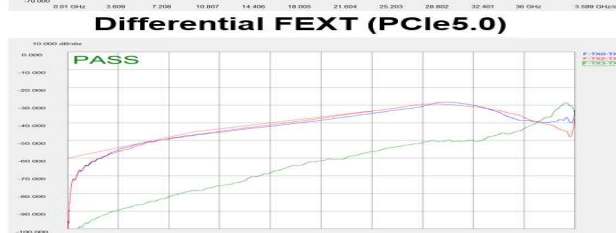
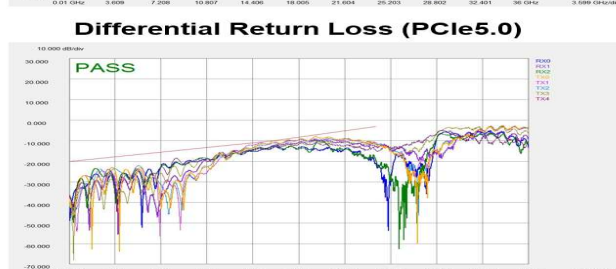
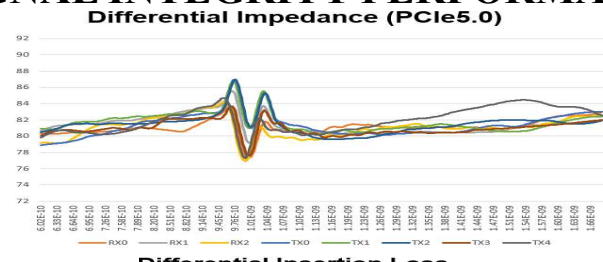
- Meet transmission efficiency.
- Fits for customer process.



DEREN

## TECHNICAL INFORMATION

### SIGNAL INTEGRITY PERFORMANCE



### MECHANICAL PERFORMANCE

- Normal Force : max35 g-f per pin
- Retention Force - Terminal : min 50 g-f per pin
- Durability: 25times.
- Dye and Pry : <25% solder joint crack
- Recommended fastening torque (mounting):
- 0.1~0.2 N.m (14.2~28.3 oz.in)
- Recommended fastening retention (un-mounting):
- 0.08 N.m. (11.3 oz.in) minimum

### ELECTRICAL PERFORMANCE

- Low level contact resistance :Initial single pin 50mΩ max. after reliability test and initial LLCR fluctuations of 20mΩ max.
- Dielectric withstanding voltage: 500VAC RMS .
- Current rating: 1.0A/pin De-rate.
- Insulation resistance: 250 MΩ Min. (Initial) 、 100 MΩ Min. (Final)
- Voltage: 25 Volts AC (rms)

### ENVIRONMENTAL

- Flammability: UL 94 V-0.
- Compliant with RoHS directive 2011/65/EU.

### SPECIFICATION

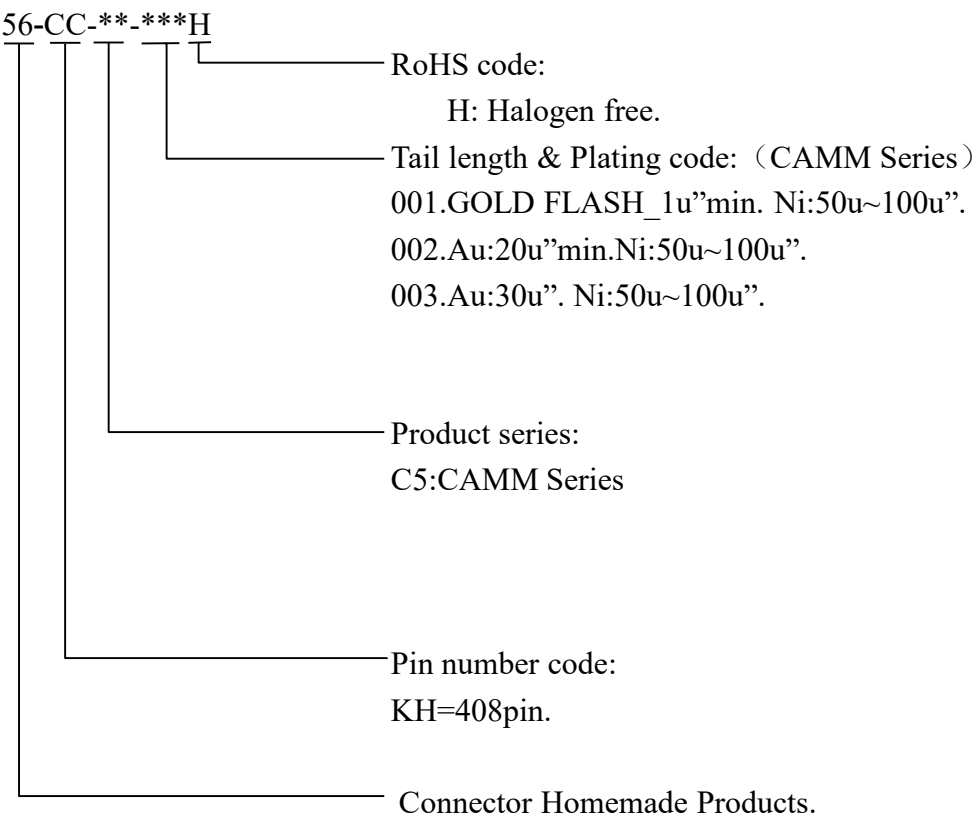
- SPEC: Meet JEDEC standard.
- DEREN PRODUCT SPEC: DR-PS-0004.

### MATERIALS

- Base Housing: LCP, UL 94 V-0.
- Contact: Copper Alloy.
- Finish: Au Plating on contact area (SEE TABLEA) [50u”~100u”] Ni plating over all.

PART NUMBERS & STRUCTURE

Part Number Description:



Product Structure

