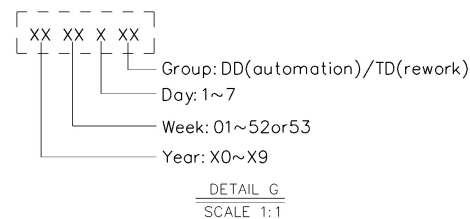
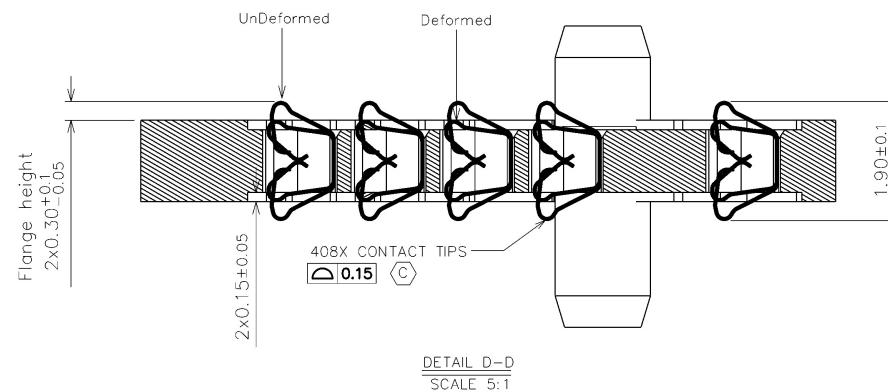
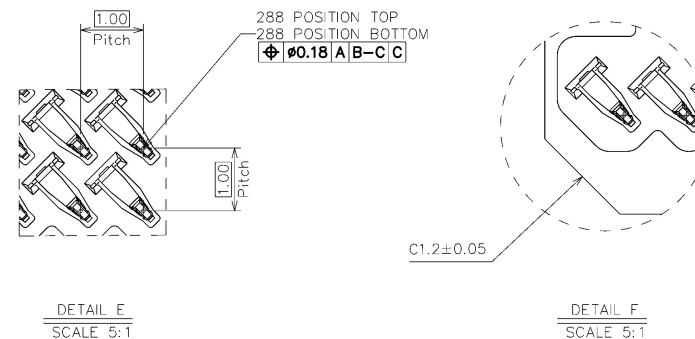
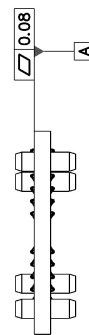
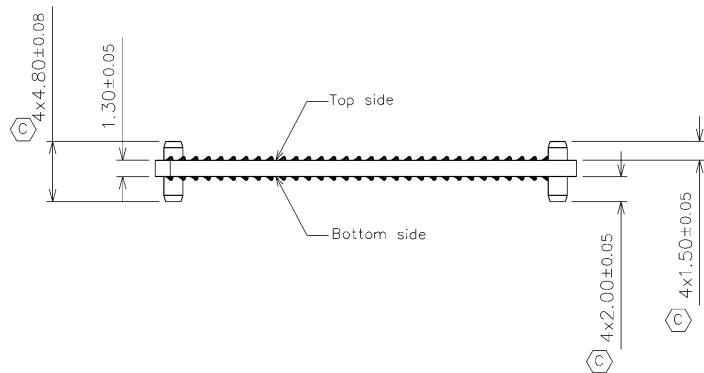




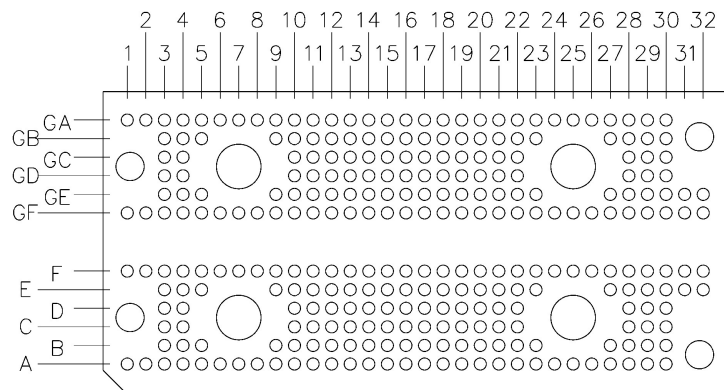
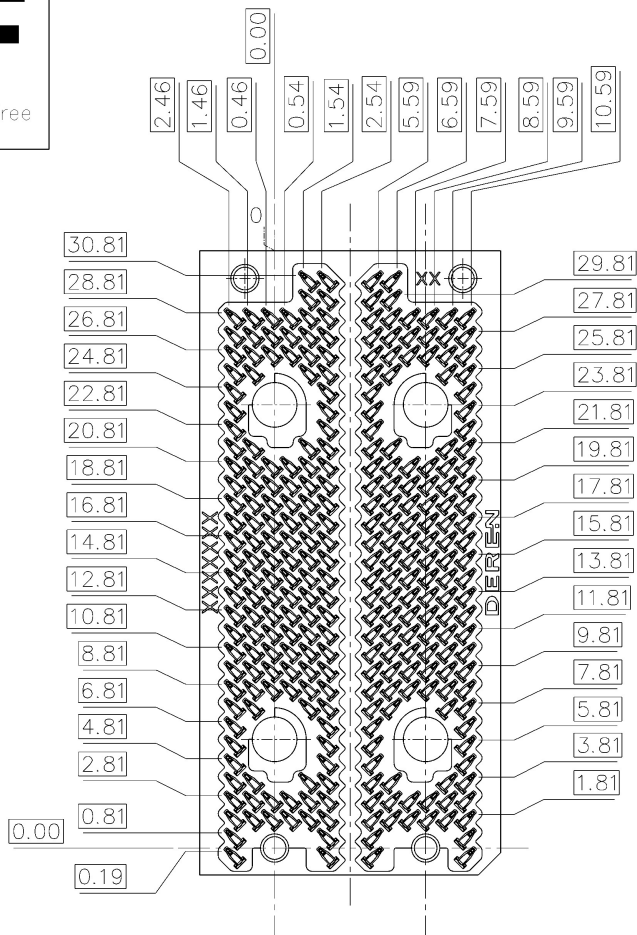
Halogen Free



DIM	TOL	DIM	TOL		DEREN SHENZHEN DEREN ELECTRONIC CO., LTD						
X.	±0.20	X.	±2°		C-DWC:		DATE	TITLE: CAMM CONNECTOR LGA288 ASSEMBLY			
.X	±0.10	.X	±1°		DESIGN:	Robin	21/2'25	P/N: SEE TABLE A			
.XX	±0.05				CHECK:	Kenneth	21/2'25	SHEET:	1/4		
					REV.	X2	APPROVAL: Andy	21/2'25	SCALE:	1:1	UNIT: mm
				DRAW NO.							
				SC2410910-1							

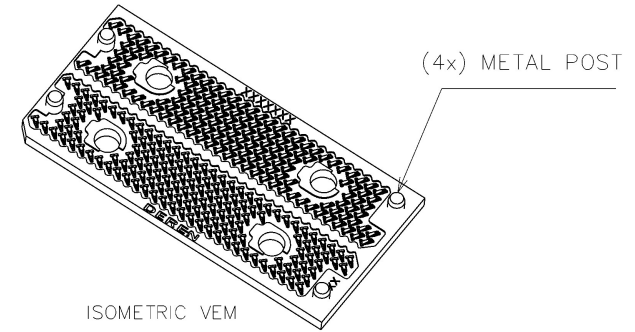
HF

Halogen Free



REFERENCE PATTERN LAYOUT

REV.	ECN NO.	LOCATION	DESCRIPTION	DATE	DESIGN
X1			INITIAL RELEASE	23/12'2024	Robin
X2			UPDATE TABLE A	21/2'2025	Robin



NOTES :

PRODUCT MUST MEET CONTROLLED SUBSTANCES SPEC. ROHS 2.0

1. MATERIAL :

1.1 HOUSING: LCP, UL94V-0, COLOR: BLACK.

1.2 CONTACTS: COPPER ALLOY.

2. FINISH:

CONTACT: Au PLATING ON CONTACT AREA (SEE TABLE A).


[50u~100u"] NICKEL UNDERPLATING OVERALL.

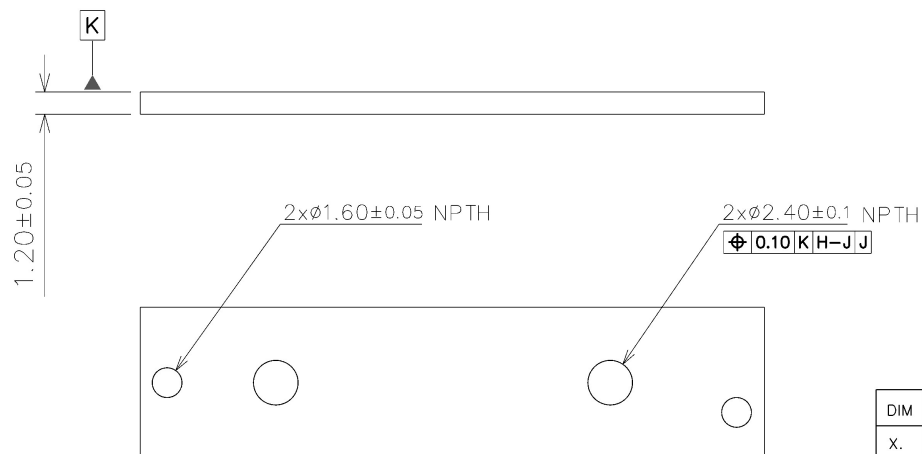
3. (C) CTF DIMENSION(CRITICAL TO FUNCTION) BY INTEL:

4. PRODUCT MUST MEET THE SPECIFICATION.

TABLE A:

3	568QC5-003H	TBD	HOUSING	LCP UL94V-0,BLACK
			CONTACT	Au: 30u", Ni: 50u~100u".
			POST	SUS 304
2	568QC5-002H	TBD	HOUSING	LCP UL94V-0,BLACK
			CONTACT	Au: 10u", Ni: 50u~100u".
			POST	SUS 304
1	568QC5-001H	TBD	HOUSING	LCP UL94V-0,BLACK
			CONTACT	GOLD FLASH, Ni: 50u~100u".
			POST	SUS 304
ITEM NO.	DEREN P/N	CUSTOMER P/N	COMPONENT	SPECIFICATION




DIM	TOL	DIM	TOL	 <b>DEREN</b> SHENZHEN DEREN ELECTRONIC CO.,LTD			
X.	±0.20	X.	±2°	C-DWG:		DATE	TITLE: CAMM CONNECTOR LGA288 ASSEMBLY
.X	±0.10	.X	±1°	DESIGN:	Robin	21/2'25	P/N: SEE TABLE A
.XX	±0.05			CHECK:	Kenneth	21/2'25	SHEET: 2/4
		REV.	X2	APPROVAL:	Andy	21/2'25	SCALE: 1:1 UNIT: mm



RECOMMEND GPU FOOTPRINT

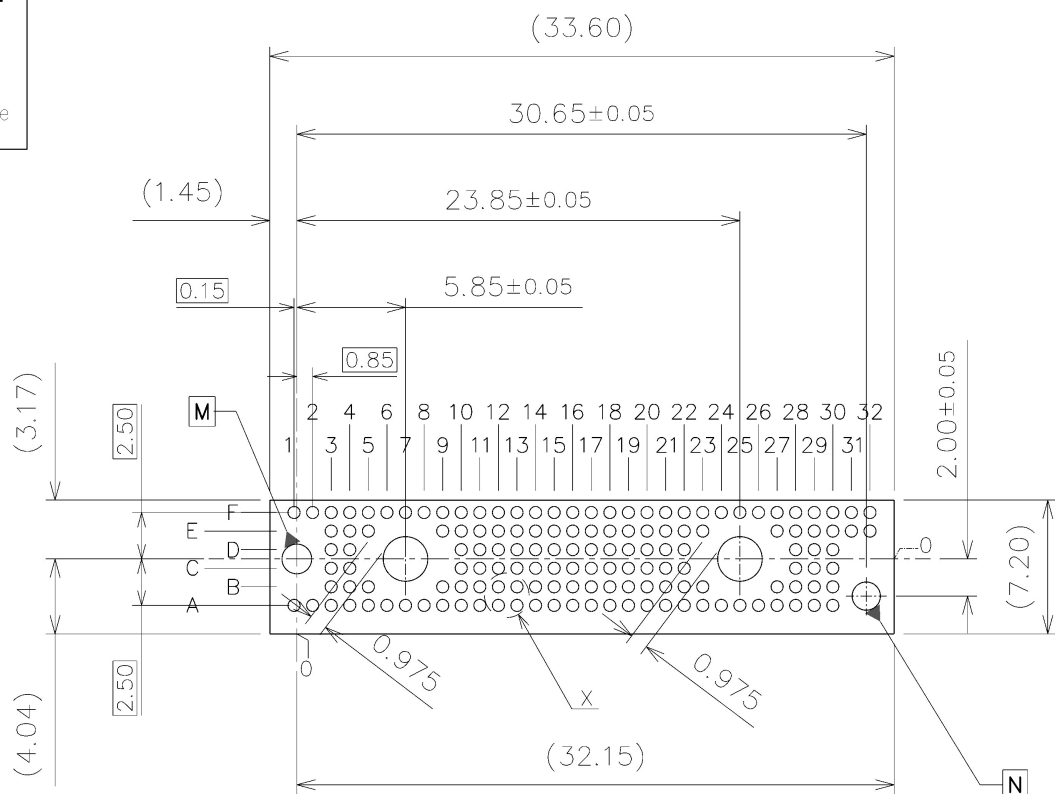
$\oplus$	$\phi 0.10$	K	H-J	J
	$\phi 0.05$	K		

DETAIL L  
SCALE 5:1

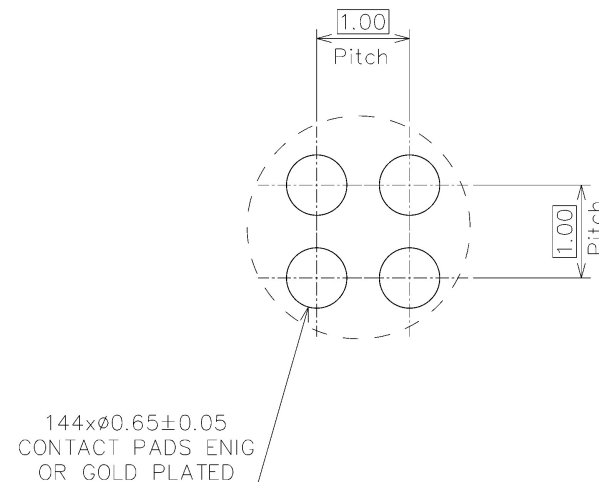
DIM	TOL	DIM	TOL		DEREN						
X.	±0.20	X.	±2°		SHENZHEN DEREN ELECTRONIC CO., LTD						
.X	±0.10	.X	±1°		C-DWG:		DATE	TITLE: CAMM CONNECTOR LGA288 ASSEMBLY			
.XX	±0.05				DESIGN:	Robin	21/2'25	P/N:	SEE TABLE A		
				DRAW NO.	CHECK:	Kenneth	21/2'25	SHEET:	3/4		
				SC2410910-1	APPROVAL:	Andy	21/2'25	SCALE:	1:1	UNIT:	mm
				REV.	X2						

HF

Halogen Free



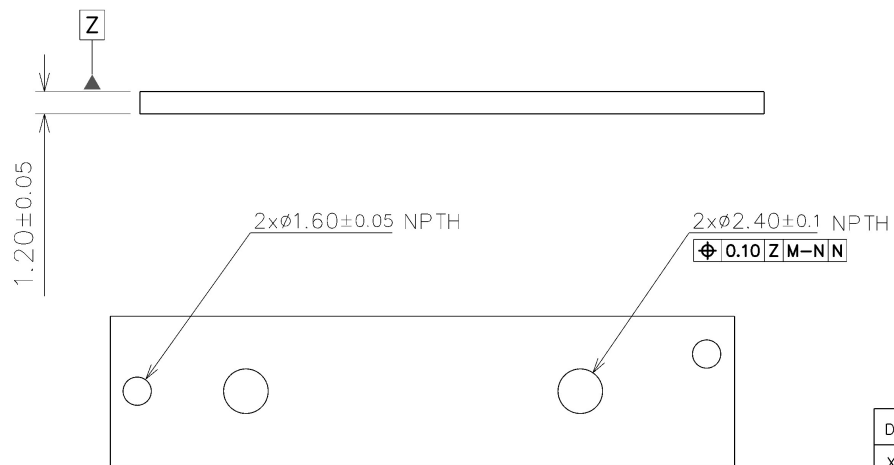
REV.	ECN NO.	LOCATION	DESCRIPTION	DATE	DESIGN
X1			INITIAL RELEASE	23/12'2024	Robin
X2			UPDATE TABLE A	21/2'2025	Robin




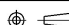
144x $\phi 0.65 \pm 0.05$   
CONTACT PADS ENIG  
OR GOLD PLATED

$\phi 0.10$  Z M-N N  
 $\phi 0.05$  Z

DETAIL X  
SCALE 5:1



RECOMMEND MB FOOTPRINT

DIM	TOL	DIM	TOL	 <b>DEREN</b> SHENZHEN DEREN ELECTRONIC CO., LTD			
X.	±0.20	X.	±2°	C-DWG:		DATE	TITLE: CAMM CONNECTOR LGA288 ASSEMBLY
.X	±0.10	.X	±1°	DESIGN:	Robin	21/2'25	P/N: SEE TABLE A
.XX	±0.05			CHECK:	Kenneth	21/2'25	SHEET: 4/4 
				REV.	X2	APPROVAL:	SCALE: 1:1 UNIT: mm
						Andy	21/2'25